

# NOTICE OF RACE & SAILING INSTRUCTIONS

*The CIYC Summer Challenge is a multi-course challenge race series where boats may complete the courses whenever they wish, as many times as they wish.*

Temporary File Location: <https://files.xnor.ca/CIYC-Summer-Challenge>

## 1 ORGANIZING AUTHORITY AND CONTACT

1.1 The CIYC Summer Challenge is organized by the Cedar Island Yacht Club. The race committee is John Blackwood.

1.2 The RC can be reached via email at [ciyc\\_challenge@xnor.ca](mailto:ciyc_challenge@xnor.ca) or via the website: [https://xnor.ca/ciyc\\_challenge/](https://xnor.ca/ciyc_challenge/)

## 2 RULES

2.1 The regatta will be governed by the rules as defined in *The Racing Rules of Sailing* 2017-2021 (RRS).

2.2 If there is a conflict between languages the English text will take precedence.

## 3 ELIGIBILITY AND ENTRY

3.1 The CIYC Summer Challenge is open to sailing vessels

3.2 The skipper must be a member of a club that is a member of Sailing Canada (SC). The list of SC Member clubs is available at <http://members.sailing.ca/index.php?action=clubs.listClubs>

3.3 Eligible boats must complete the race registration form here: <Google Forms Link>, and completing a waiver and submitting it by email to the RC (waiver available here: ) prior to starting an entry.

3.4 A boat may make as many entries for any of the courses as they choose, and may enter entries in more than once class, but may only make an entry in one class on one course at a time.

**3.5** A boat may submit an entry by:

**3.5.1** Notifying the RC by email or via the website prior to starting an attempt and providing the following information:

- The name of the boat
- The name of the skipper
- The course being challenged
- The class being sailed under

**3.5.2** Providing the GPS track in the form of a GPX file for the entry to the RC via email or the website within 72 hours of completing the course

## 4 CLASSIFICATION & RATINGS

**4.1** CIYC Summer Challenge is open to three classes. The classes are:

**4.1.1** Open - any wind driven vessel

**4.1.2** Flying Sail - any sailboat with a rating for flying sails

**4.1.3** Non-Flying Sail - any sailboat with a rating for non-flying sails

**4.2** Ratings shall be taken from, in order of preference:

**4.2.1** PHRF-LE Certificates

**4.2.2** PHRF Certificates from other PHRF bodies

**4.2.3** PHRF ratings for substantially similar local boats

**4.2.4** PHRF ratings for similar boats from a PHRF body for a similar boat

**4.2.5** Other ratings as set by the RC at the request of the competitor based on the PHRF rating system.

**4.3** The determination of the rating shall be solely at the discretion of the RC unless the rating is from a valid 2019 or 2020 PHRF certificate from a PHRF body.

## 5 SCHEDULE

**5.1** Any race entry must start after 00:00 June 1st 2020, and must end before 24:00 October 23rd, 2020

## 6 THE COURSES

**6.1** The start and finish point for all courses is GPS waypoint CIYC\_SF (see Appendix A: Waypoints & Courses). The start or end time is the time when the vessel is closest to the waypoint and within 0.05 nautical miles of the waypoint.

**6.2** A mark is passed when a boat passes within 0.05 nautical miles of the waypoint for that mark.

**6.2 Kingsville Course:** The course starts at waypoint CIYC\_SF, then passes waypoint CIYC\_Kingsville, returning to waypoint CIYC\_SF. Distance is 4.8 nautical miles.

**6.3 Colchester Course:** The course starts at waypoint CIYC\_SF, then passes waypoint CIYC\_Colchester, returning to waypoint CIYC\_SF. Distance is 14.9 nautical miles.

**6.4 Chicken Islands Course:** The course starts at waypoint CIYC\_SF, then passes waypoint CIYC\_Chickens, returning to waypoint CIYC\_SF. Distance is 26.6 nautical miles.

**6.4 Point Pelee Course:** The course starts at waypoint CIYC\_SF, then passes waypoint CIYC\_Pelee, returning to waypoint CIYC\_SF. Distance is 35.8 nautical miles.

## 7 Time Limits

7.1 There are no time limits

## 8 SCORING

**8.1** Entries for the CIYC Summer Challenge shall be time corrected using the time-on-distance PHRF method.

**8.2** The series shall be scored as follows:

**8.2.1** The fastest entry for each boat by class and course (course series)

**8.2.2** The course series combined using the low point system, with a boat scored DNC where the boat has no entry for a particular course in that class (Overall CIYC Summer Series)

## 9 PRIZES

**9.1** Prizes shall be awarded to the first place boat in each class for each course, as well as the first place boat in the Overall CIYC Summer Series. Awards may be awarded for 2nd and 3rd place at the discretion of the RC and organizing authority depending on participation level.

## 10 NOTICES TO COMPETITORS & CHANGES TO THE SAILING INSTRUCTIONS

**10.1** Notices to competitors and changes to these instructions shall be distributed to all registered participants and posted on the even website.

**10.2** Notices to competitors and changes to these instructions may be posted at CIYC.

## 11 PROTESTS, REQUESTS FOR REDRESS, SCORING INQUIRIES

**11.1** Protests, requests for redress, and scoring inquiries must be submitted to the RC via email or via the website at the earliest reasonable opportunity.

**11.2** Protests may be settled by the RC with the agreement of all parties involved via time adjustments or scoring penalties.

## 12 RESULTS

**12.1** Final results will be announced via email to all registrants on October 31st and posted on the event website

**12.2** Interim results will be posted on the event website periodically as entries are received. Interim results may change based on entries, protests, or scoring inquiries and are not official.

## 13 DISCLAIMER OF LIABILITY & INSURANCE

**13.1** Competitors participate in the event entirely at their own risk. See RRS 4, Decision to Race. The organizing authority and RC will not accept any liability for material damage or personal injury or death sustained in conjunction with or prior to, during, or after the regatta.

**13.2** Each participating boat shall be insured with valid third-party liability insurance with a minimum cover of \$2 million CAD per incident or the equivalent.

# Appendix A: Waypoints & Courses

## Waypoints

The waypoints are as follows:

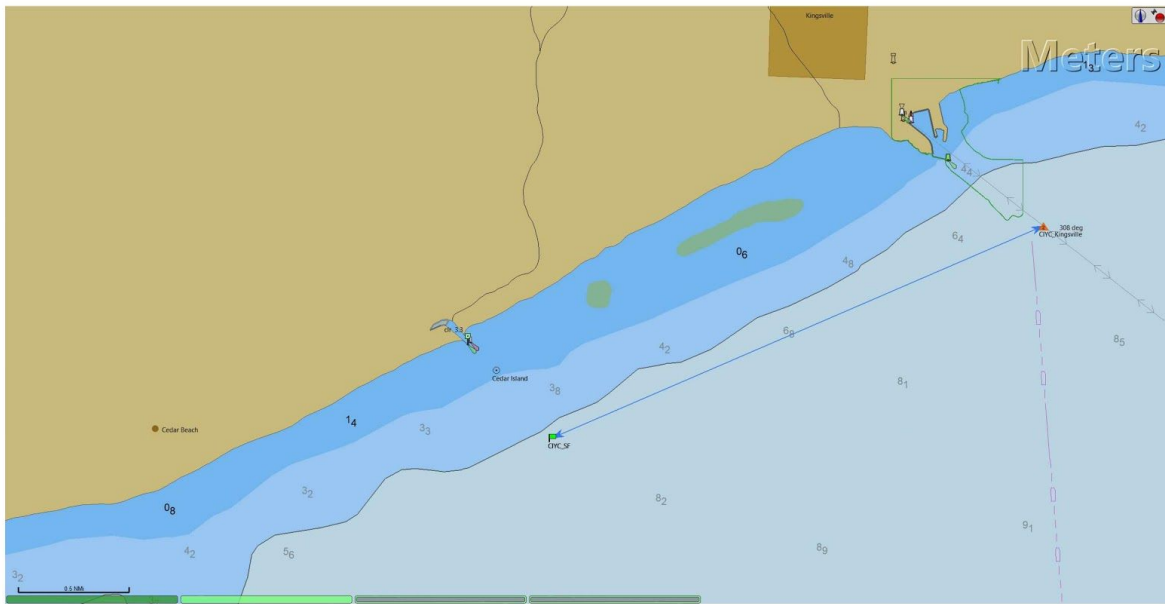
Waypoint	Latitude	Longitude
CIYC_SF	42.003173	-82.770595
CIYC_Kingsville	42.019048	-82.721104
CIYC_Colchester	41.975723	-82.932703
CIYC_Chickens	41.782448	-82.795750
CIYC_Pelee	41.811712	-82.463693

All waypoints are also available as GPX files on the event website.

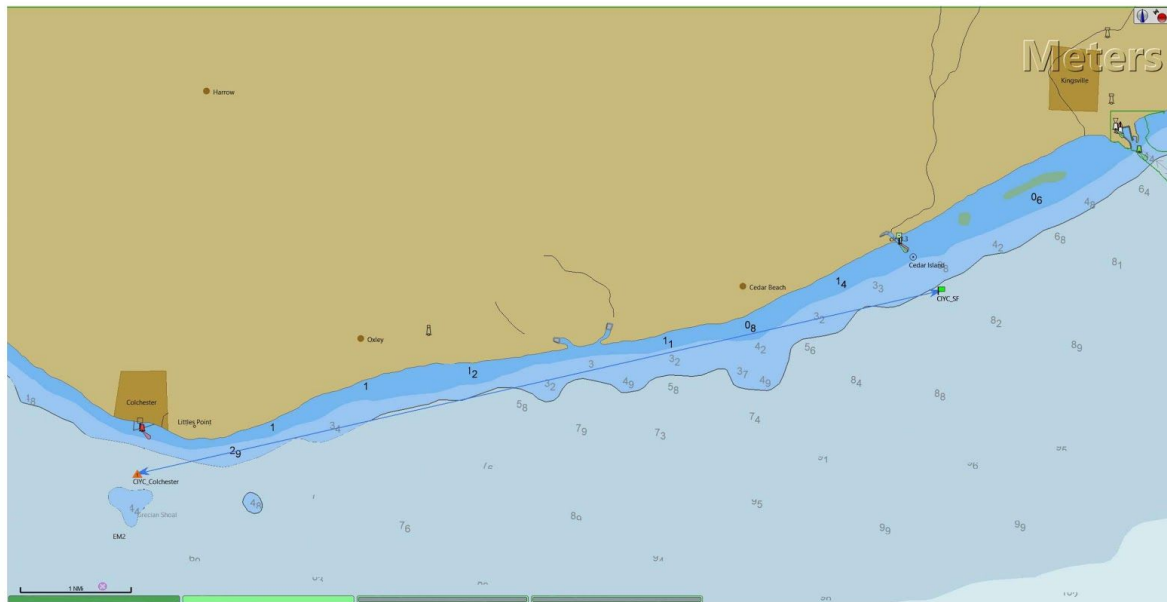
## Courses

All courses are available as GPX courses and PDFs on the event website.

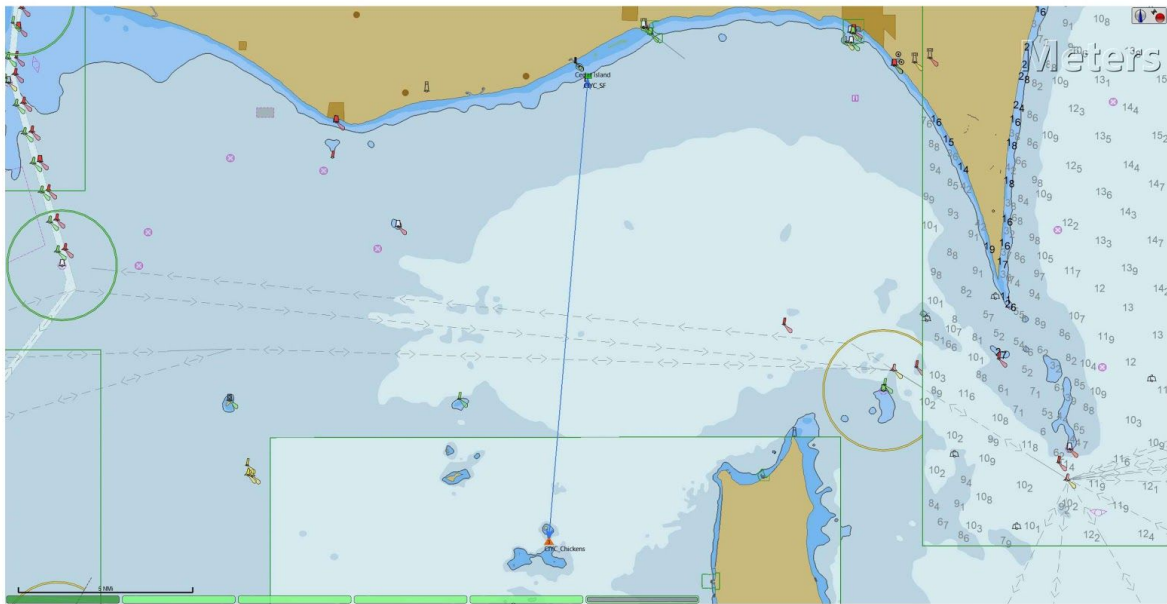
# Kingsville Course



# Colchester Course



# Chicken Island Course





# Point Pelee Course

